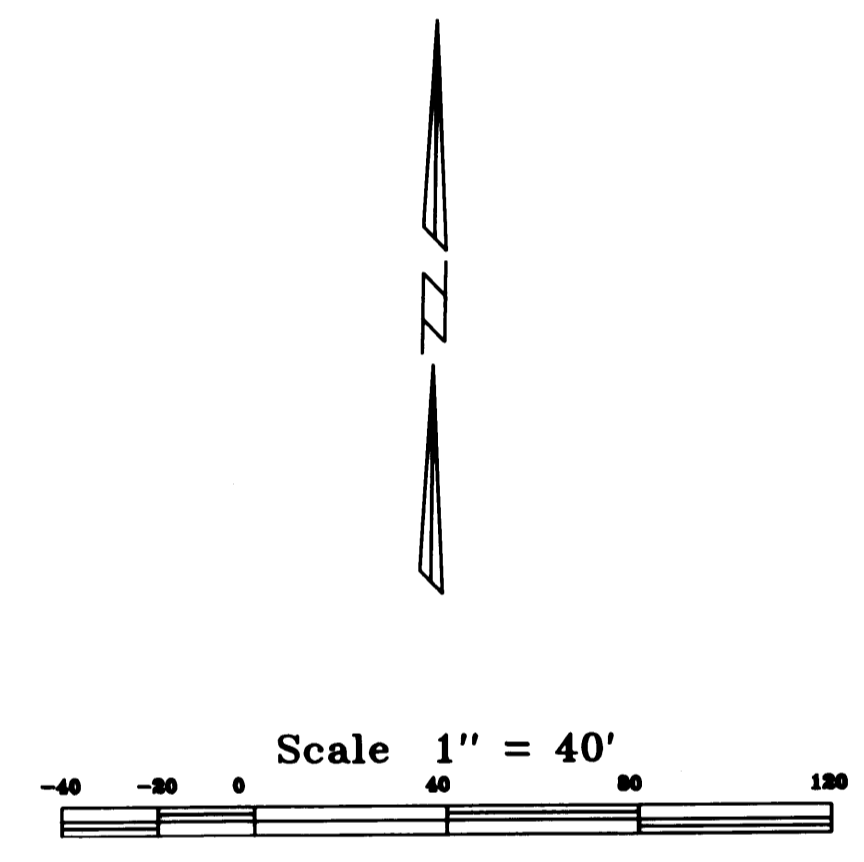
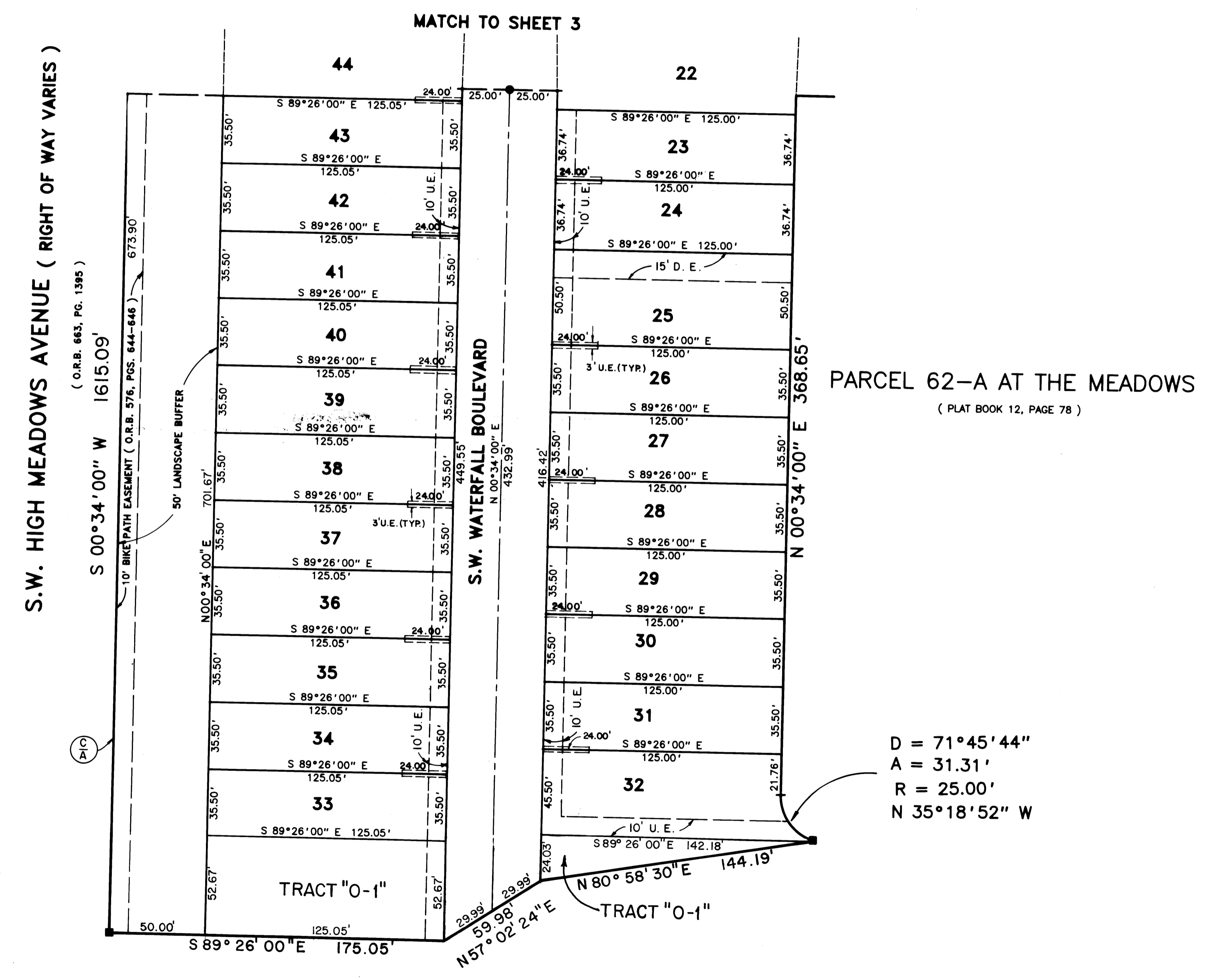


A PLAT OF  
**PARCEL 62-B AT THE MEADOWS**  
 BEING PLAT NO. 61 OF MARTIN DOWNS A P.U.D. ALSO BEING A REPLAT OF  
 A PORTION OF PARCEL 62-A AT THE MEADOWS BEING PLAT NO. 57 OF MARTIN DOWNS  
 A P.U.D. AS RECORDED IN P.B. 12, PG. 78, PUBLIC RECORDS OF MARTIN COUNTY,  
 LYING IN SECTION 12, TOWNSHIP 38 SOUTH, RANGE 40 EAST MARTIN COUNTY, FLORIDA.  
 SHEET 4 OF 4      JANUARY, 1992

I, MARSHA STILLER, CLERK OF  
 THE CIRCUIT COURT OF MARTIN  
 COUNTY, FLORIDA, HEREBY CERTIFY  
 THAT THIS PLAT WAS FILED FOR  
 RECORD IN PLAT BOOK 12,  
 PAGE 98, MARTIN COUNTY,  
 FLORIDA, PUBLIC RECORDS, THIS  
 DAY OF \_\_\_\_\_,  
 A.D. 19\_\_\_\_.  
 MARSHA STILLER, CLERK OF  
 CIRCUIT COURT  
 MARTIN COUNTY, FLORIDA  
 By: \_\_\_\_\_  
 DEPUTY CLERK  
 FILE No. \_\_\_\_\_



PARCEL 62-A AT THE MEADOWS  
 ( PLAT BOOK 12, PAGE 78 )

	Landmark Surveying & Mapping Inc. 1850 FOREST HILL BOULEVARD PH. (407)433-5405 SUITE 100 W.P.B. FLORIDA
	<b>PARCEL 62-B AT THE MEADOWS</b>